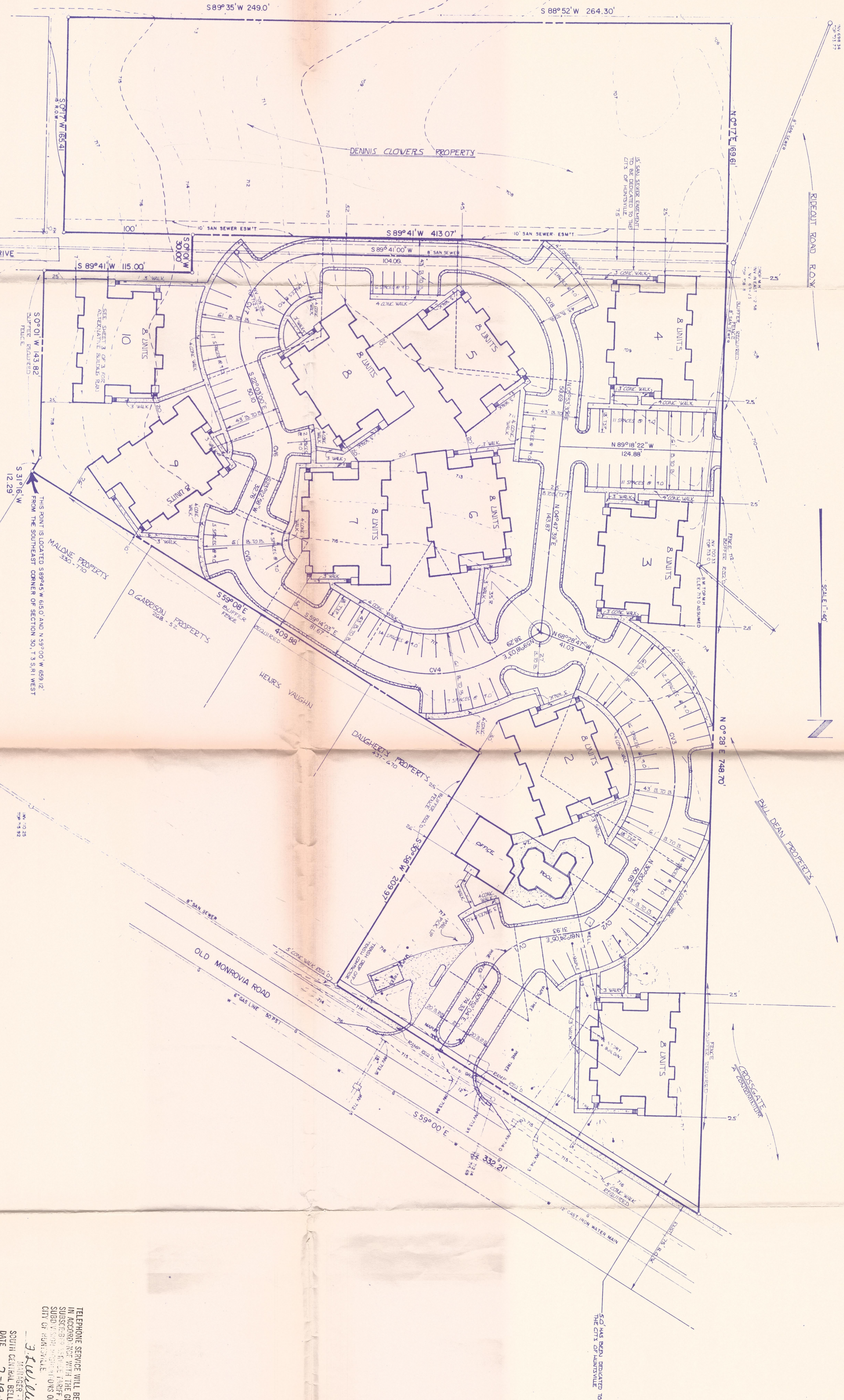


CURVE TABLE

NAME	ANGLE	RADIUS	LENGTH	BEARING	CHORD
CV1	59°08'00"	22.78	48.19	S 55°53'27" W	44.73
CV2	45°00'00"	100.00	157.08	S 45°00'00" W	100.00
CV3	107°00'18"	103.41	183.31	S 54°53'27" W	38.27
CV4	61°18'31"	102.18	109.28	N 89°18'22" W	104.11
CV5	45°00'00"	50.00	78.54	S 45°00'00" W	50.00
CV6	45°00'00"	50.00	78.54	S 45°00'00" W	50.00
CV7	111°23'21"	63.64	123.78	S 31°26'14" W	103.45
CV8	59°42'19"	66.53	143.03	N 42°48'39" W	128.78



DENSITY
 1.50 UNITS PER ACRE
 2.00 UNITS PER ACRE
 2.50 UNITS PER ACRE
 3.00 UNITS PER ACRE
 3.50 UNITS PER ACRE
 4.00 UNITS PER ACRE
 4.50 UNITS PER ACRE
 5.00 UNITS PER ACRE
 5.50 UNITS PER ACRE
 6.00 UNITS PER ACRE
 6.50 UNITS PER ACRE
 7.00 UNITS PER ACRE
 7.50 UNITS PER ACRE
 8.00 UNITS PER ACRE
 8.50 UNITS PER ACRE
 9.00 UNITS PER ACRE
 9.50 UNITS PER ACRE
 10.00 UNITS PER ACRE

STONE'S THROW
 A CONDOMINIUM PROJECT IN
 HUNTSVILLE, ALABAMA

SMITH ENGINEERING COMPANY, INC.
 220 SIVLEY ROAD
 HUNTSVILLE, ALABAMA

SCALE: 1" = 40'

FIELD BOOK

DATE: JULY 1985

SHEET 1 OF 3

TELEPHONE SERVICE WILL BE PROVIDED
 IN ACCORDANCE WITH THE GENERAL
 SUBDIVISION MAP ACT AND THE
 SUBDIVISION MAP ACTS OF THE
 CITY OF HUNTSVILLE

J. Williams
 REGISTERED SURVEYOR
 SOUTH CENTRAL DISTRICT TELEPHONE CO.
 DATE 7-19-85

PREPARED BY:
 MEMPHIS R. CALVERT, REGISTERED SURVEYOR OF FIELD SURVEYS
 CIVIL ENGINEER
 CITY OF HUNTSVILLE, ALABAMA